

Through E-mail

**HIMACHAL PRADESH  
STATE WATER AND SANITATION MISSION  
WSSO, DHALLI, SHIMLA-171012**

NO: SWSM-WSSO-WATER ATM/2013-14/  
To

2106-08

Dated:-

02-01-2015


✓ The Engineering-in-Chief  
Irrigation and Public Health Department,  
U.S. Club, Shimla-1

**Subject:**

**Installation of WATER ATMs in H.P. on pilot basis on  
Built, Operate, Manage and Maintain (BOMM) Mode**


In reference to your office letter no. IPH-PH-Water ATMs (18)2014-5213-14 dated 18<sup>th</sup> December 2014, the brief note regarding the progress in installation of WATER ATMs in the State and water dispensing reports for the WATER ATM installed at The Ridge, Shimla and Mata Chintpurani Temple, Una are enclosed for perusal please. The same may also be uploaded on departmental website. Monthly water sale reports are also attached for two ATMs at The Ridge and Mata Chintpurani Temple.

Encls: As above

  
Chief Engineer  
cum Director (WSSO)  
Dhalli, Shimla-12

Copy to:-

1. The Additional Chief Secretary (IPH) to the Govt. of Himachal Pradesh, Secretariat, Shimla-2 for information please.
2. The Programmer cum Consultant (MIS), IPH, U.S. Club, Shimla for uploading the same on departmental website.

  
Chief Engineer  
cum Director (WSSO)  
Dhalli, Shimla-12

## Installation of “Water ATMs” in the State on pilot basis on Built, Operate, Manage and Maintain (BOMM) Mode-An Innovative Step towards Quality Water

### Brief Note

The State Water Policy 2013 advocates the use of Water ATMs at places of mass public congregation like temples, fairs etc. so as to ensure availability of quality water to the beneficiaries. The Govt. of Himachal Pradesh in its endeavour to provide assured quality water has decided to install Water ATMs at certain fixed locations of the State on pilot basis initially.

These Water ATMs are being installed by M/S Piramal Water Pvt. Ltd. Mumbai under its brand “SARVAJAL” on no profit no loss basis through a tripartite MoU among IPH Department as First Party, concerned agency under the jurisdiction of which the locations falls (i.e. Municipal Corporation, Temple Trusts, HRTC, Hospital Administration etc.) as Second Party and M/s Piramal Water (P), Ltd. as Third Party on Build, Operate, Manage & Maintain (BOMM) basis. The firm has successfully installed & operating these Water ATMs in Gujarat, Rajasthan & Delhi on BOMM basis. The main features of the Water ATMs are:-

- Fully automated, integrated, purification and dispensing unit.
- Quality assured by real time remote monitoring.
- Solar powered, cloud connected and RFID enabled.
- Affordable price of 50 paisa per liter.
- 24X7 reliable service.
- No water wastage and no plastic waste.
- Reduction in water borne disease burden.
- Enhanced consumer satisfaction.

The detail of MOUs entered and WATER ATMs installed is as under:

| S. No. | Place of Water ATM installation                                    | Status of MoU (Yes/No) | Status of installation (Yes/No) | Remarks                |
|--------|--|------------------------|---------------------------------|------------------------|
| 1      | The Ridge, Shimla  | Yes                    | Yes                             | Installed in July 2014 |
| 2      | Vikas Nagar (Shimla)   | Yes                    | Yes                             | Installed in Dec. 2014 |
| 3      | Mata Chintpurani Mandir, Una                                       | Yes                    | Yes                             | Installed in Aug. 2014 |
| 4      | Chamunda Mata Mandir, Kangra                                       | No                     | No                              |                        |
| 5      | Mata Jawalaji Mandir, Kangra                                       | No                     | No                              |                        |
| 6      | Dari, Dharamsala   | Yes                    | Yes                             | Installed in Dec. 2014 |
| 7      | HRTC Bus Stand, Mandi  | Yes                    | No                              |                        |
| 8      | Old Bus Stand, Shimla  | Yes                    | No                              |                        |
| 9      | IGMC, Shimla   | No                     | No                              |                        |
|        | <b>Total MoU signed and Water ATM installed till December 2014</b> | <b>6</b>               | <b>4</b>                        |                        |



Department of Irrigation and Public Health  
Partnered  
Integrated Water ATM Unit  
at The Ridge, Shimla

*Water Dispensed Report  
August 2014*



**Piramal Water Private Limited**

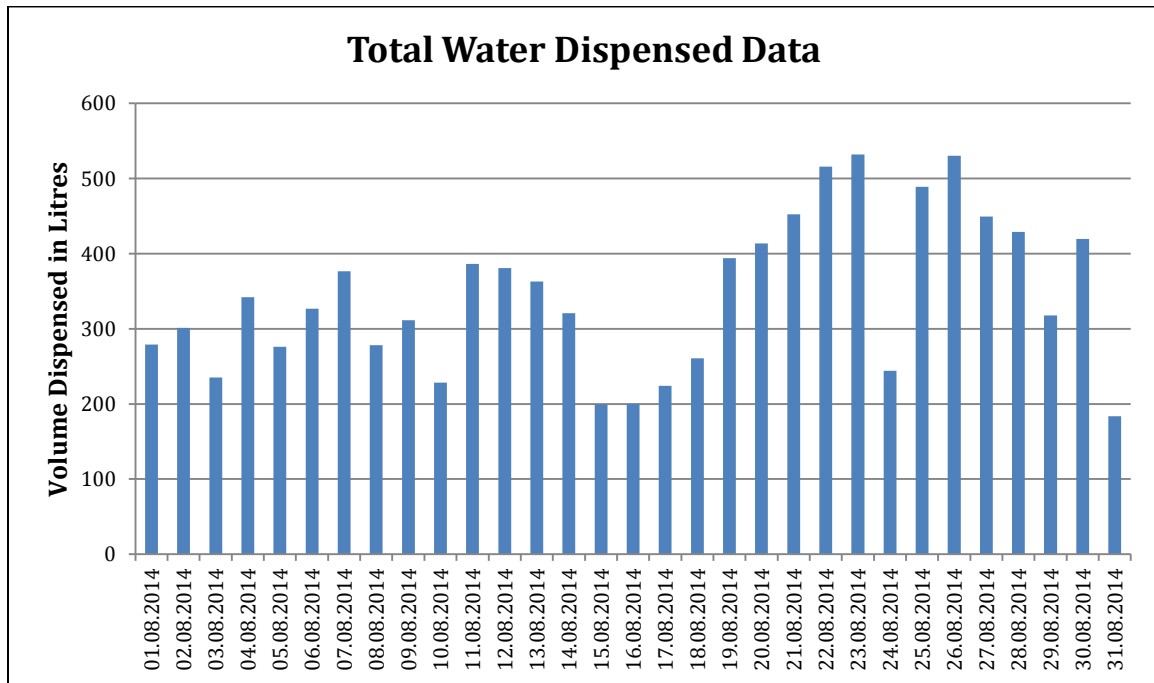
ChandanBungalow, Near Darpana Academy, Usmanpura, Ahmedabad, Gujarat 380 013  
P +91-79-40502100, 1800-103-2334 (Toll Free) E info@sarvajal.com

## The Ridge, Shimla

Reporting Period: 01 August 2014 to 31 August 2014

|  |           |
|--|-----------|
| Total No. of Cards Sold                  | 1084      |
| Total No. of Cards Used                  | 833       |
| Total Volume Dispensed                   | 10662.4 L |
| Avg. Daily Volume                        | 343.94 L  |
| No. of Cards with > 5 Transactions       | 324       |
| No. of Cards with 1-5 Transactions       | 509       |
| No. of Cards Recharged with Balance      | 65        |
| Vol. of Water Dispensed from Master Card | 1174 L    |

Daily Water Dispensed Graph:



Max Daily Water Dispensed: 532.1 L (23 Aug 2014)

Minimum Daily Water Dispensed: 183.7 L (31 Aug 2014)

Median Daily Water Dispensed: 326.7 L

Annexure A: Weekly Water Dispensed Report

| Week Number | Date Range       | Total Vol. Dispensed |
|-------------|------------------|----------------------|
| Week 1      | 01 Aug to 7 Aug  | 2136 L               |
| Week 2      | 8 Aug to 14 Aug  | 2269 L               |
| Week 3      | 15 Aug to 21 Aug | 2145 L               |
| Week 4      | 22 Aug to 28 Aug | 3190 L               |

Annexure B: Daily Water Dispensed Report

|             |         |             |         |
|-------------|---------|-------------|---------|
| 1 Aug 2014  | 279 L   | 16 Aug 2014 | 200.3 L |
| 2 Aug 2014  | 301 L   | 17 Aug 2014 | 224 L   |
| 3 Aug 2014  | 235.3 L | 18 Aug 2014 | 260.9 L |
| 4 Aug 2014  | 342.1 L | 19 Aug 2014 | 394.2 L |
| 5 Aug 2014  | 276.1 L | 20 Aug 2014 | 413.7 L |
| 6 Aug 2014  | 326.7 L | 21 Aug 2014 | 452.6 L |
| 7 Aug 2014  | 376.5 L | 22 Aug 2014 | 516 L   |
| 8 Aug 2014  | 278.4 L | 23 Aug 2014 | 532.1 L |
| 9 Aug 2014  | 311.6 L | 24 Aug 2014 | 244 L   |
| 10 Aug 2014 | 228.3 L | 25 Aug 2014 | 489 L   |
| 11 Aug 2014 | 386.2 L | 26 Aug 2014 | 530.3 L |
| 12 Aug 2014 | 380.7 L | 27 Aug 2014 | 449.4 L |
| 13 Aug 2014 | 362.9 L | 28 Aug 2014 | 429.1 L |
| 14 Aug 2014 | 321 L   | 29 Aug 2014 | 317.9 L |
| 15 Aug 2014 | 199.2 L | 30 Aug 2014 | 419.6 L |
|             |         | 31 Aug 2014 | 183.7 L |



Department of Irrigation and Public Health  
Partnered  
Integrated Water ATM Unit  
at The Ridge, Shimla

Water Dispensed Report  
September 2014



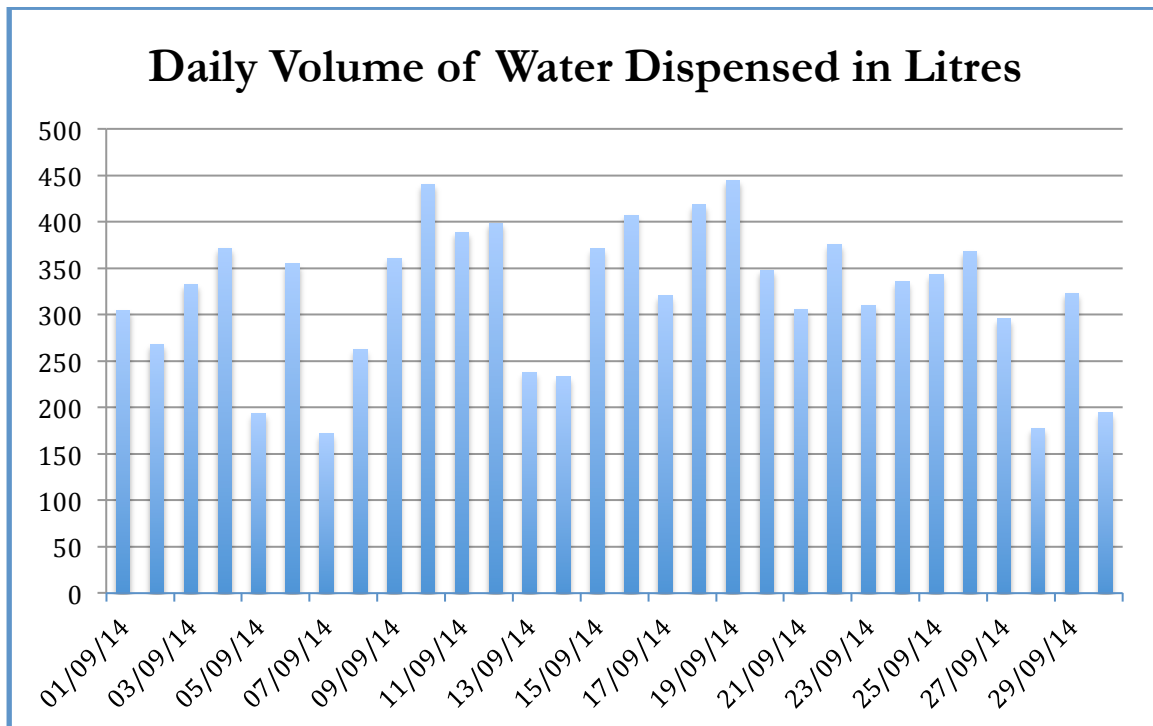
**Piramal Water Private Limited**

ChandanBungalow, Near Darpana Academy, Usmanpura, Ahmedabad, Gujarat 380 013  
P +91-79-40502100, 1800-103-2334 (Toll Free) E [info@sarvajal.com](mailto:info@sarvajal.com)

## The Ridge, Shimla

| 01 September 2014 to 30 September 2014   |          |
|--|----------|
| Total No. of Cards Sold                  | 1206     |
| Total No. of Cards Used                  | 983      |
| Total Volume Dispensed                   | 9652.2 L |
| Avg. Daily Volume                        | 321.74 L |
| No. of Cards with > 5 Transactions       | 234      |
| No. of Cards with 1-5 Transactions       | 344      |
| No. of Recharges                         | 72       |
| Vol. of Water Dispensed from Master Card | 822.8 L  |

### Daily Water Dispensed Graph:



**Max Daily Water Dispensed:** 444.9 L (19 September 2014)

**Minimum Daily Water Dispensed:** 171.5 L (7 September 2014)

**Median Daily Water Dispensed:** 334.05 L

Annexure A: Weekly Water Dispensed Report

| Week Number | Date Range       | Total Vol. Dispensed |
|-------------|------------------|----------------------|
| Week 1      | 01 Sep to 7 Sep  | 1995.4               |
| Week 2      | 8 Sep to 14 Sep  | 2258.8               |
| Week 3      | 15 Sep to 21 Sep | 2541.7               |
| Week 4      | 22 Sep to 28 Sep | 2333.4               |

Annexure B: Daily Water Dispensed Report

| Date   | Volume  | Date   | Volume  |
|--------|---------|--------|---------|
| 01-Sep | 304.2 L | 16-Sep | 407 L   |
| 02-Sep | 267.6 L | 17-Sep | 320.4 L |
| 03-Sep | 332.5 L | 18-Sep | 418.2 L |
| 04-Sep | 371.3 L | 19-Sep | 444.9 L |
| 05-Sep | 193.7 L | 20-Sep | 347.7 L |
| 06-Sep | 354.6 L | 21-Sep | 305.6 L |
| 07-Sep | 171.5 L | 22-Sep | 375.1 L |
| 08-Sep | 262.3 L | 23-Sep | 310.2 L |
| 09-Sep | 360.9 L | 24-Sep | 335.6 L |
| 10-Sep | 440.1 L | 25-Sep | 343.2 L |
| 11-Sep | 388.4 L | 26-Sep | 368.3 L |
| 12-Sep | 398.3 L | 27-Sep | 295.4 L |
| 13-Sep | 237.3 L | 28-Sep | 177.2 L |
| 14-Sep | 232.8 L | 29-Sep | 323 L   |
| 15-Sep | 370.7 L | 30-Sep | 194.2 L |





Department of Irrigation and Public Health  
Partnered  
Integrated Water ATM Unit  
at The Ridge, Shimla

Water Dispensed Report  
October 2014



**Piramal Water Private Limited**

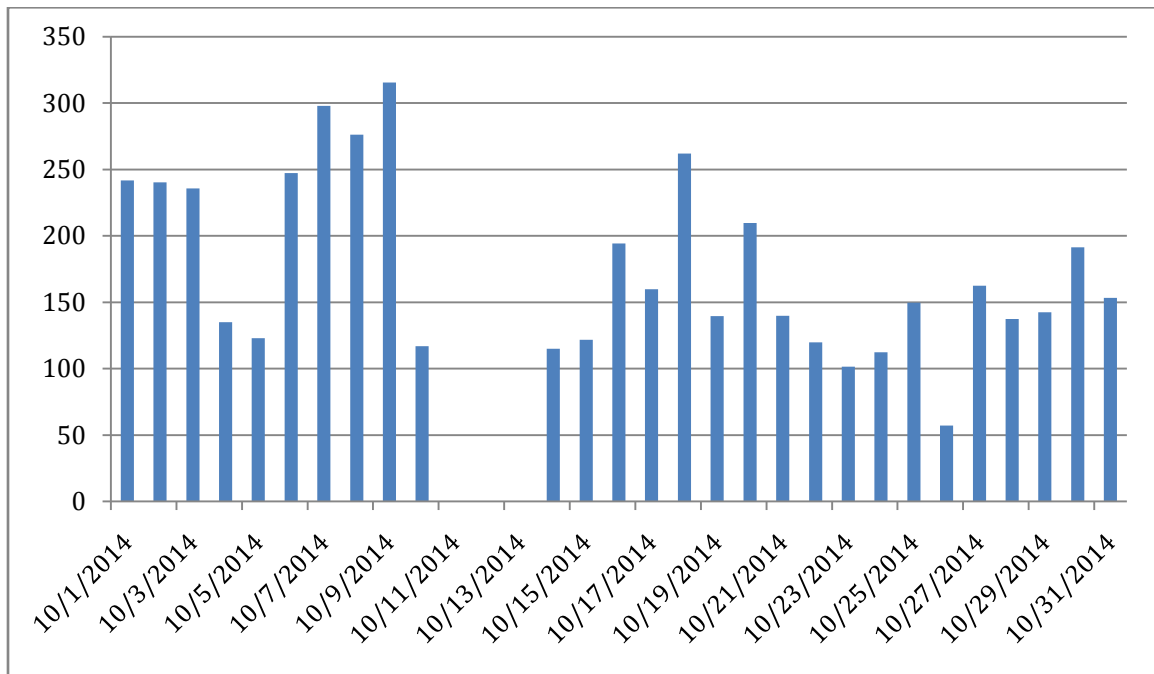
Chandan Bungalow, Near Darpana Academy, Usmanpura, Ahmedabad, Gujarat 380 013

**P** +91-79-40502100, 1800-103-2334 (Toll Free) **E** info@sarvajal.com

## The Ridge, Shimla

| 01 October 2014 to 31 October 2014       |                               |
|--|-------------------------------|
| Total No. of Cards Sold                  | 1225                          |
| Total No. of Cards Used                  | 1022                          |
| Total Volume Dispensed                   | 4899.2 L                      |
| Avg. Daily Volume                        | 158.03 L                      |
| No. of Cards with > 5 Transactions       | 110                           |
| No. of Cards with 1-5 Transactions       | 254                           |
| No. of Cards Recharged with Balance      | 29                            |
| Vol. of Water Dispensed from Master Card | 398 times to dispense 334.5 L |

### Daily Water Dispensed (In Litres) Graph:



**Max Daily Water Dispensed:** 315.6 L (9 October 2014)

**Minimum Daily Water Dispensed:** 0 L (11, 12 & 13 October 2014)

**Median Daily Water Dispensed:** 142.5 L

### Annexure A: Weekly Water Dispensed Report

| Week Number | Date Range       | Total Vol. Dispensed |
|-------------|------------------|----------------------|
| Week 1      | 1 Oct to 7 Oct   | 1520.9 L             |
| Week 2      | 8 Oct to 14 Oct  | 823.8 L              |
| Week 3      | 15 Oct to 21 Oct | 1226.7 L             |
| Week 4      | 22 Oct to 28 Oct | 840.6 L              |

### Annexure B: Daily Water Dispensed Report

| Date   | Volume  | Date   | Volume  |
|--------|---------|--------|---------|
| 01-Oct | 241.7 L | 17-Oct | 159.9 L |
| 02-Oct | 240.3 L | 18-Oct | 262.1 L |
| 03-Oct | 235.8 L | 19-Oct | 139.5 L |
| 04-Oct | 134.9 L | 20-Oct | 209.6 L |
| 05-Oct | 122.9 L | 21-Oct | 139.7 L |
| 06-Oct | 247.4 L | 22-Oct | 119.8 L |
| 07-Oct | 297.9 L | 23-Oct | 101.6 L |
| 08-Oct | 276.2 L | 24-Oct | 112.3 L |
| 09-Oct | 315.6 L | 25-Oct | 149.8 L |
| 10-Oct | 117 L   | 26-Oct | 57.2 L  |
| 11-Oct | 0 L     | 27-Oct | 162.5 L |
| 12-Oct | 0 L     | 28-Oct | 137.4 L |
| 13-Oct | 0 L     | 29-Oct | 142.5 L |
| 14-Oct | 115 L   | 30-Oct | 191.3 L |
| 15-Oct | 121.7 L | 31-Oct | 153.4 L |
| 16-Oct | 194.2 L |        |         |



Department of Irrigation and Public Health  
Partnered  
Integrated Water ATM Unit  
at The Ridge, Shimla

Water Dispensed Report  
November 2014



**Piramal Water Private Limited**

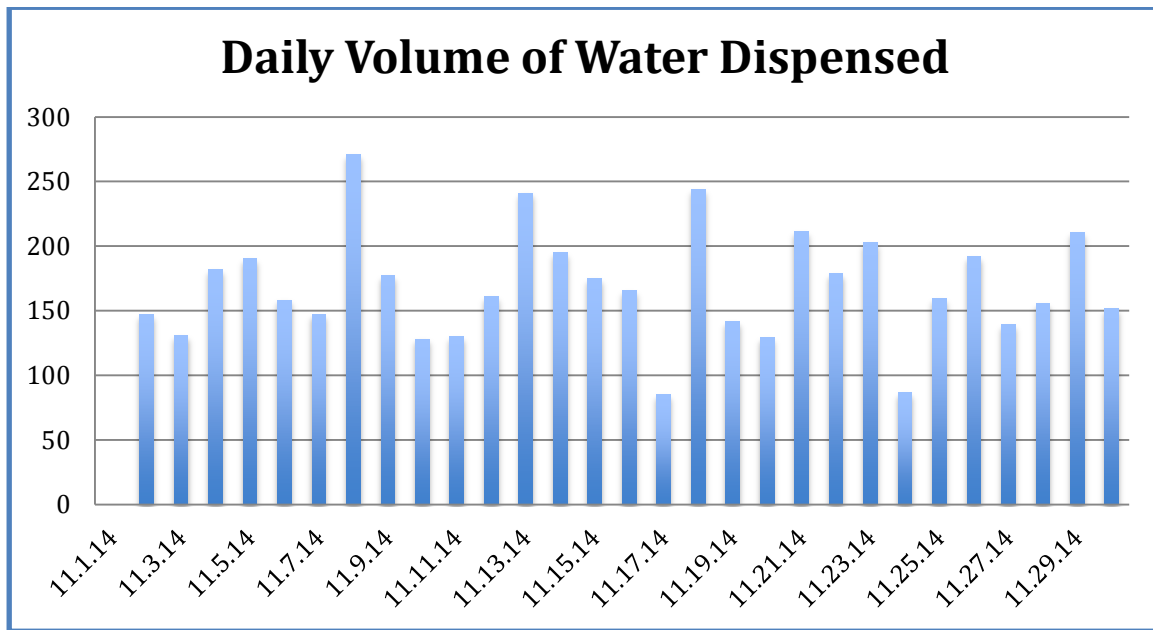
ChandanBungalow, Near Darpana Academy, Usmanpura, Ahmedabad, Gujarat 380 013

**P** +91-79-40502100, 1800-103-2334 (Toll Free) **E** info@sarvajal.com

## The Ridge, Shimla

| 01 November 2014 to 30 November 2014     |          |
|--|----------|
| Total No. of Cards Sold                  | 1272     |
| Total No. of Cards Used                  | 1075     |
| Total Volume Dispensed                   | 4921.5L  |
| Avg. Daily Volume                        | 164.05 L |
| No. of Cards with > 5 Transactions       | 109      |
| No. of Cards with 1-5 Transactions       | 232      |
| No. of Recharges                         | 17       |
| Vol. of Water Dispensed from Master Card | 454.3 L  |

### Daily Water Dispensed Graph:



**Max Daily Water Dispensed:** 270.7 L (7November 2014)

**Minimum Daily Water Dispensed:** 34.5 L (30November 2014)

**Median Daily Water Dispensed:**160.2 L

Annexure A: Weekly Water Dispensed Report

| Week Number | Date Range       | Total Vol. Dispensed |
|-------------|------------------|----------------------|
| Week 1      | 01 Nov to 7 Nov  | 1226.7               |
| Week 2      | 8 Nov to 14 Nov  | 1207.2               |
| Week 3      | 15 Nov to 21 Nov | 1155.5               |
| Week 4      | 22 Nov to 28 Nov | 1146.1               |

Annexure B: Daily Water Dispensed Report

| Date   | Volume   | Date   | Volume   |
|--------|----------|--------|----------|
| 01-Nov | 147.40 L | 16-Nov | 85.40 L  |
| 02-Nov | 130.80 L | 17-Nov | 243.50 L |
| 03-Nov | 181.70 L | 18-Nov | 141.90 L |
| 04-Nov | 190.70 L | 19-Nov | 129.00 L |
| 05-Nov | 158.20 L | 20-Nov | 211.30 L |
| 06-Nov | 147.20 L | 21-Nov | 178.60 L |
| 07-Nov | 270.70 L | 22-Nov | 202.60 L |
| 08-Nov | 177.20 L | 23-Nov | 86.60 L  |
| 09-Nov | 128.0 L  | 24-Nov | 159.70 L |
| 10-Nov | 130.30 L | 25-Nov | 191.60 L |
| 11-Nov | 160.70 L | 26-Nov | 139.20 L |
| 12-Nov | 241.10 L | 27-Nov | 155.60 L |
| 13-Nov | 195.10 L | 28-Nov | 210.80 L |
| 14-Nov | 174.80 L | 29-Nov | 151.50 L |
| 15-Nov | 165.80 L | 30-Nov | 34.50 L  |



Department of Irrigation and Public Health  
Partnered  
Integrated Water ATM Unit  
at Chintpurni Mata Mandir

*Water Dispensed Report  
August 2014*



**Piramal Water Private Limited**

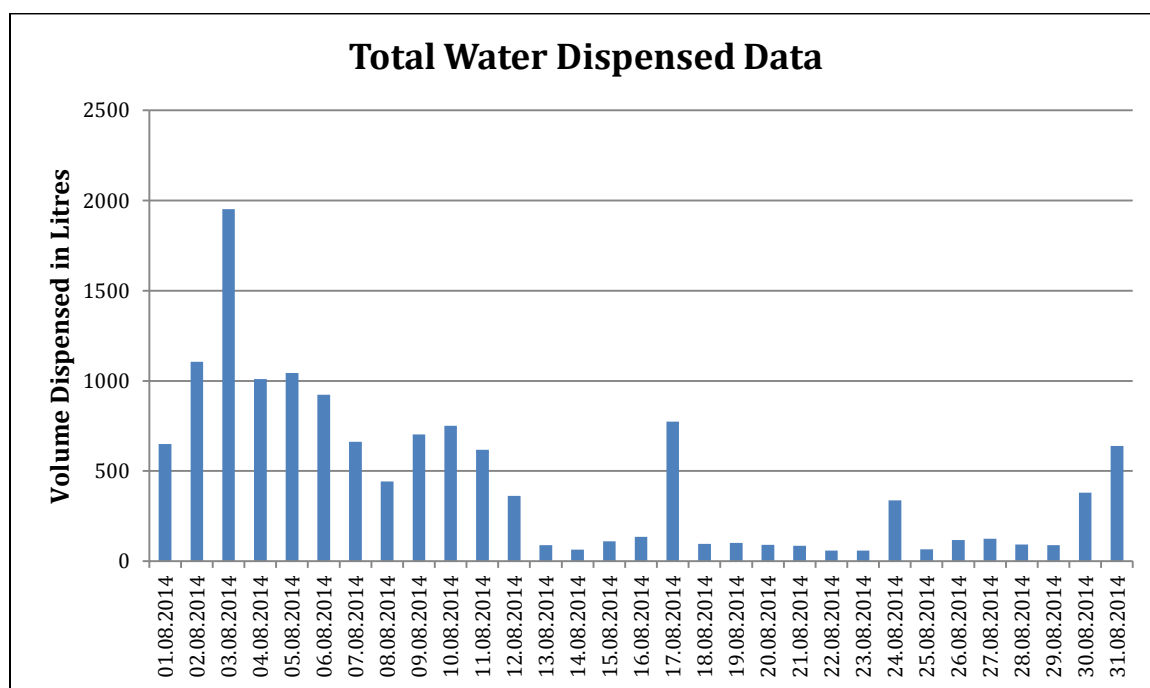
ChandanBungalow, Near Darpana Academy, Usmanpura, Ahmedabad, Gujarat 380 013  
P +91-79-40502100, 1800-103-2334 (Toll Free) E info@sarvajal.com

## Chintpurni Mata Mandir, Una District

Reporting Period: 01 August 2014 to 31 August 2014

|  |          |
|--|----------|
| Total No. of Cards Sold                  | 85       |
| Total No. of Cards Used                  | 59       |
| Total Volume Dispensed                   | 13736 L  |
| Avg. Daily Volume                        | 443.09 L |
| No. of Cards with > 5 Transactions       | 35       |
| No. of Cards with 1-5 Transactions       | 24       |
| No. of Cards Recharged with Balance      | 3        |
| Vol. of Water Dispensed from Master Card | 2553 L   |

Daily Water Dispensed Graph:



Max Daily Water Dispensed: 1953.1 L (03 Aug 2014)

Minimum Daily Water Dispensed: 58.4 L (22 Aug 2014)

Median Daily Water Dispensed: 337.3 L



Annexure A: Weekly Water Dispensed Report

| Week Number | Date Range       | Total Vol. Dispensed |
|-------------|------------------|----------------------|
| Week 1      | 01 Aug to 7 Aug  | 7348 L               |
| Week 2      | 8 Aug to 14 Aug  | 3029 L               |
| Week 3      | 15 Aug to 21 Aug | 1396 L               |
| Week 4      | 22 Aug to 28 Aug | 856 L                |

Annexure B: Daily Water Dispensed Report (in Liters)

|             |        |             |       |
|-------------|--------|-------------|-------|
| 1 Aug 2014  | 650.1  | 16 Aug 2014 | 134.5 |
| 2 Aug 2014  | 1105.6 | 17 Aug 2014 | 774   |
| 3 Aug 2014  | 1953.1 | 18 Aug 2014 | 96.9  |
| 4 Aug 2014  | 1010.7 | 19 Aug 2014 | 101.7 |
| 5 Aug 2014  | 1043.8 | 20 Aug 2014 | 91.5  |
| 6 Aug 2014  | 923.1  | 21 Aug 2014 | 86.1  |
| 7 Aug 2014  | 661.5  | 22 Aug 2014 | 58.4  |
| 8 Aug 2014  | 442.4  | 23 Aug 2014 | 58.6  |
| 9 Aug 2014  | 702.5  | 24 Aug 2014 | 337.3 |
| 10 Aug 2014 | 750.8  | 25 Aug 2014 | 66.7  |
| 11 Aug 2014 | 617.8  | 26 Aug 2014 | 116.7 |
| 12 Aug 2014 | 363    | 27 Aug 2014 | 124.6 |
| 13 Aug 2014 | 88.7   | 28 Aug 2014 | 93.3  |
| 14 Aug 2014 | 63.9   | 29 Aug 2014 | 88.7  |
| 15 Aug 2014 | 110.8  | 30 Aug 2014 | 380.1 |
|             |        | 31 Aug 2014 | 639.1 |



Department of Irrigation and Public Health  
Partnered  
Integrated Water ATM Unit  
at Chintpurni Mata Mandir

Water Dispensed Report  
September 2014



**Piramal Water Private Limited**

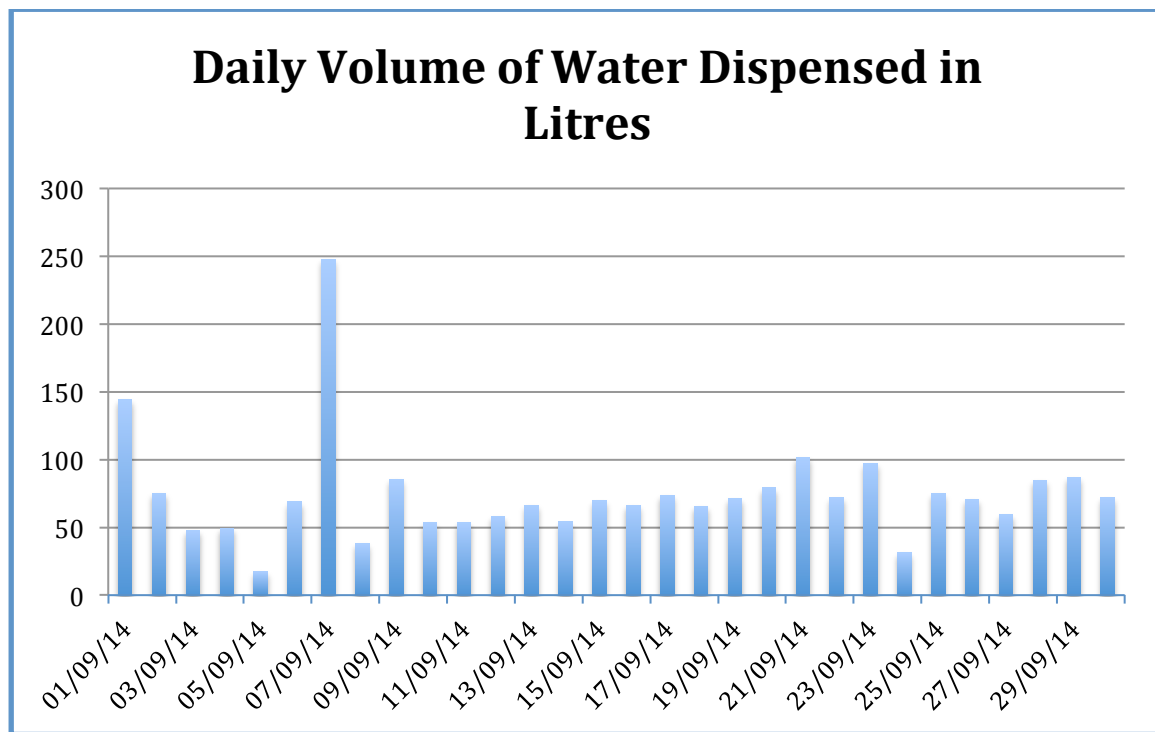
ChandanBungalow, Near Darpana Academy, Usmanpura, Ahmedabad, Gujarat 380 013

P +91-79-40502100, 1800-103-2334 (Toll Free) E [info@sarvajal.com](mailto:info@sarvajal.com)

## Chintpurni, Mata Mandir, Una District

| 01 September 2014 to 30 September 2014   |          |
|--|----------|
| Total No. of Cards Sold                  | 102      |
| Total No. of Cards Used                  | 79       |
| Total Volume Dispensed                   | 2236.4 L |
| Avg. Daily Volume                        | 74.55 L  |
| No. of Cards with > 5 Transactions       | 36       |
| No. of Cards with 1-5 Transactions       | 25       |
| No. of Recharges                         | 15       |
| Vol. of Water Dispensed from Master Card | 715.6 L  |

### Daily Water Dispensed Graph:



**Max Daily Water Dispensed:** 247.7 L (7 September 2014)

**Minimum Daily Water Dispensed:** 17.5 L (5 September 2014)

**Median Daily Water Dispensed:** 70.3 L

Annexure A: Weekly Water Dispensed Report

| Week Number | Date Range       | Total Vol. Dispensed |
|-------------|------------------|----------------------|
| Week 1      | 01 Sep to 7 Sep  | 650.4                |
| Week 2      | 8 Sep to 14 Sep  | 657.2                |
| Week 3      | 15 Sep to 21 Sep | 527.4                |
| Week 4      | 22 Sep to 28 Sep | 490.2                |

Annexure B: Daily Water Dispensed Report

| Date   | Volume  | Date   | Volume  |
|--------|---------|--------|---------|
| 01-Sep | 144 L   | 16-Sep | 66.4 L  |
| 02-Sep | 75 L    | 17-Sep | 73.5 L  |
| 03-Sep | 47.9 L  | 18-Sep | 65.5 L  |
| 04-Sep | 49.5 L  | 19-Sep | 71.3 L  |
| 05-Sep | 17.5 L  | 20-Sep | 79.1 L  |
| 06-Sep | 68.8 L  | 21-Sep | 101.7 L |
| 07-Sep | 247.7 L | 22-Sep | 71.9 L  |
| 08-Sep | 38 L    | 23-Sep | 97.2 L  |
| 09-Sep | 85.3 L  | 24-Sep | 31.2 L  |
| 10-Sep | 53.8 L  | 25-Sep | 74.8 L  |
| 11-Sep | 53.6 L  | 26-Sep | 70.7 L  |
| 12-Sep | 58.3 L  | 27-Sep | 59.5 L  |
| 13-Sep | 66.5 L  | 28-Sep | 84.9 L  |
| 14-Sep | 54 L    | 29-Sep | 86.7 L  |
| 15-Sep | 69.9 L  | 30-Sep | 72.2 L  |



Department of Irrigation and Public Health  
Partnered  
Integrated Water ATM Unit  
At Chintpurni Mata Mandir

Water Dispensed Report  
October 2014



**Piramal Water Private Limited**

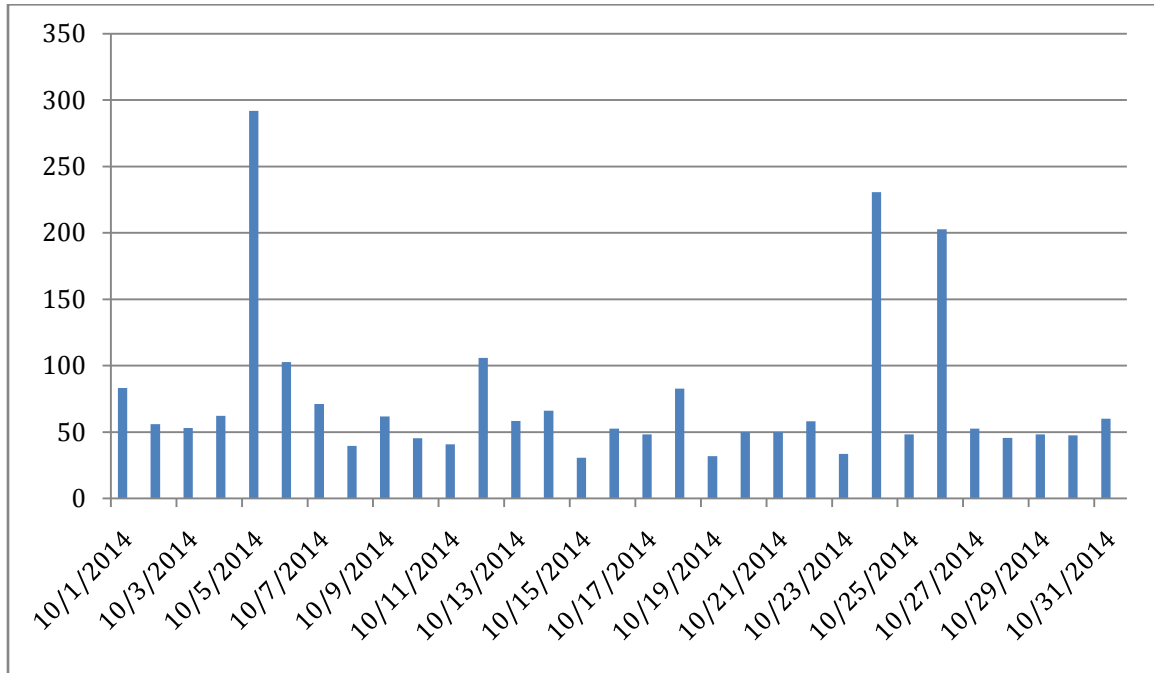
ChandanBungalow, Near Darpana Academy, Usmanpura, Ahmedabad, Gujarat 380 013

**P** +91-79-40502100, 1800-103-2334 (Toll Free) **E** info@sarvajal.com

## Chintpurni, Mata Mandir, Una District

| 01 October 2014 to 30 October 2014       |                                       |
|--|---------------------------------------|
| Total No. of Cards Sold                  | <b>113</b>                            |
| Total No. of Cards Used                  | <b>93</b>                             |
| Total Volume Dispensed                   | <b>2310.5 L</b>                       |
| Avg. Daily Volume                        | <b>74.53 L</b>                        |
| No. of Cards with > 5 Transactions       | <b>36</b>                             |
| No. of Cards with 1-5 Transactions       | <b>24</b>                             |
| No. of Cards Recharged with Balance      | <b>12</b>                             |
| Vol. of Water Dispensed from Master Card | <b>803 times to dispense 1061.1 L</b> |

### Daily Water Dispensed (In Litres) Graph:



**Max Daily Water Dispensed:** 292 L (5 October 2014)

**Minimum Daily Water Dispensed:** 30.7 L (15 October 2014)

**Median Daily Water Dispensed:** 53 L

### Annexure A: Weekly Water Dispensed Report

| Week Number | Date Range       | Total Vol. Dispensed |
|-------------|------------------|----------------------|
| Week 1      | 01 Oct to 7 Oct  | 720.2 L              |
| Week 2      | 8 Oct to 14 Oct  | 417.5 L              |
| Week 3      | 15 Oct to 21 Oct | 345.7 L              |
| Week 4      | 22 Oct to 28 Oct | 671.4 L              |

### Annexure B: Daily Water Dispensed Report

| Date   | Volume  | Date   | Volume  |
|--------|---------|--------|---------|
| 01-Oct | 83.2 L  | 17-Oct | 48.2 L  |
| 02-Oct | 56 L    | 18-Oct | 82.7 L  |
| 03-Oct | 53 L    | 19-Oct | 31.9 L  |
| 04-Oct | 62.3 L  | 20-Oct | 49.8 L  |
| 05-Oct | 292 L   | 21-Oct | 49.8 L  |
| 06-Oct | 102.7 L | 22-Oct | 58.1 L  |
| 07-Oct | 71 L    | 23-Oct | 33.5 L  |
| 08-Oct | 39.6 L  | 24-Oct | 230.8 L |
| 09-Oct | 61.7 L  | 25-Oct | 48.1 L  |
| 10-Oct | 45.2 L  | 26-Oct | 202.7 L |
| 11-Oct | 40.8 L  | 27-Oct | 52.6 L  |
| 12-Oct | 105.8 L | 28-Oct | 45.6 L  |
| 13-Oct | 58.3 L  | 29-Oct | 48.2 L  |
| 14-Oct | 66.1 L  | 30-Oct | 47.4 L  |
| 15-Oct | 30.7 L  | 31-Oct | 60.1 L  |
| 16-Oct | 52.6 L  |        |         |



Department of Irrigation and Public Health  
Partnered  
Integrated Water ATM Unit  
At Chintpurni Mata Mandir

Water Dispensed Report  
November 2014



**Piramal Water Private Limited**

ChandanBungalow, Near Darpana Academy, Usmanpura, Ahmedabad, Gujarat 380 013

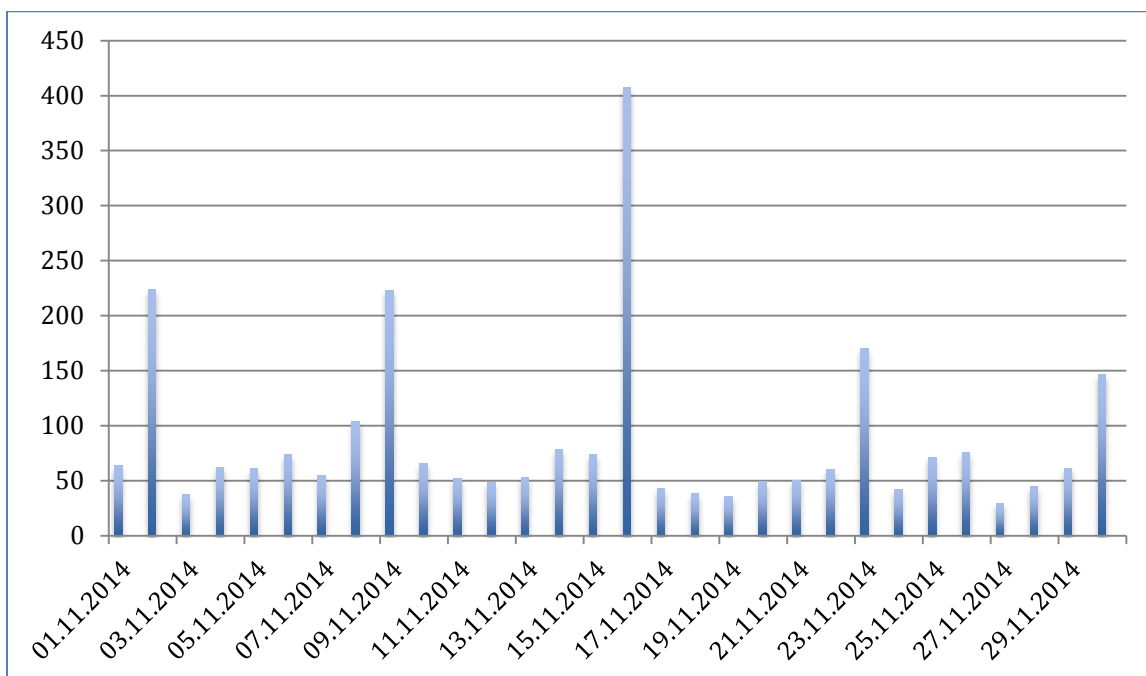
**P** +91-79-40502100, 1800-103-2334 (Toll Free) **E** info@sarvajal.com



## Chintpurni, Mata Mandir, Una District

| 01 November 2014 to 30 November 2014     |          |
|--|----------|
| Total No. of Cards Sold                  | 125      |
| Total No. of Cards Used                  | 104      |
| Total Volume Dispensed                   | 2598.9 L |
| Avg. Daily Volume                        | 86.63 L  |
| No. of Cards with > 5 Transactions       | 36       |
| No. of Cards with 1-5 Transactions       | 24       |
| No. of Cards Recharged with Balance      | 10       |
| Vol. of Water Dispensed from Master Card | 1310.5 L |

### Daily Water Dispensed (In Litres) Graph:



**Max Daily Water Dispensed:** 407 L (16 November 2014)

**Minimum Daily Water Dispensed:** 29.1 L (27 November 2014)

**Median Daily Water Dispensed:** 61.35 L

### Annexure A: Weekly Water Dispensed Report

| Week Number | Date Range       | Total Vol. Dispensed |
|-------------|------------------|----------------------|
| Week 1      | 01 Nov to 7 Nov  | 577 L                |
| Week 2      | 8 Nov to 14 Nov  | 623.9 L              |
| Week 3      | 15 Nov to 21 Nov | 697 L                |
| Week 4      | 22 Nov to 28 Nov | 493.3 L              |

### Annexure B: Daily Water Dispensed Report

| Date   | Volume | Date   | Volume |
|--------|--------|--------|--------|
| 01-Nov | 63.5   | 16-Nov | 407    |
| 02-Nov | 224    | 17-Nov | 43     |
| 03-Nov | 37.2   | 18-Nov | 38.6   |
| 04-Nov | 62.4   | 19-Nov | 35.2   |
| 05-Nov | 61.2   | 20-Nov | 49     |
| 06-Nov | 74.2   | 21-Nov | 50.5   |
| 07-Nov | 54.5   | 22-Nov | 60.3   |
| 08-Nov | 103.6  | 23-Nov | 170.5  |
| 09-Nov | 223.2  | 24-Nov | 42.1   |
| 10-Nov | 65.2   | 25-Nov | 71.3   |
| 11-Nov | 52.1   | 26-Nov | 75.6   |
| 12-Nov | 48.5   | 27-Nov | 29.1   |
| 13-Nov | 53     | 28-Nov | 44.4   |
| 14-Nov | 78.3   | 29-Nov | 61.5   |
| 15-Nov | 73.7   | 30-Nov | 146.2  |